

# ARMISHAWS

REMOVALS & STORAGE

*"Moving at the highest standard"*

**You can be sure of Armishaws:**

- UK - local and long distance
- Full **European** service - **France, Spain and Portugal**
- **Full- and part-loads**
- Full **Packing** service
- Containerised **storage**
- Friendly, **personal** service
- Local business, **family owned** and run since 1973



For a survey and **FREE same day** quote please call:  
**James Nicholas International Removals, Swindon**

## 01793 849 315

Visit our website at: [www.armishwas.com](http://www.armishwas.com)  
 or email us at: [enquiries@armishaws.com](mailto:enquiries@armishaws.com)




# Scene in Baydon

..a bi-monthly digest of what's going on in Baydon: **Dec 16**



'tis the season to be jolly

Copy for next Scene by:  
**19 Jan 2017.....Please!**

Email: [baydonscene@email.com](mailto:baydonscene@email.com) Or leave in the bag with Debbie at the shop

Hello All

An other amazing firework display on bonfire night. Well done to the firework team, they really do the village proud.

We desperately need Parish councillors in the village - could you do this? More details of what the Parish Council does inside

Merry Christmas and a Happy New Year to all.

*Jo Cooling*

### Since the last Scene Muttley has...

... "helped out at work". Electricians in a neighbouring office ripped out our phone lines (communication problem, no pun intended). They immediately set about replacing them but didn't seem as bothered about it as we were. They only became bothered when "a large black dog sneaked in and ate our lunch!". Apparently they had a battle with him over 3 large sausages rolls. Muttley won 2-1.



Also we must apologise for Muttley's behaviour on Halloween. Whilst we offered a treat to one lovely young girl, Muttley very quietly stole treats she already in her Halloween basket. More Trick **and** Treat, sorry....

**Scene in Baydon** - published by Jo Cooling

For advertising rates and any other query please email  
baydonscene@email.com

Opinions expressed herein are not necessarily the views of the Editor

## Contacts & Telephone Numbers

### For Village Clubs, Associations, Groups

Aldbourn Theatre Group	Dr David Robertson	541464
Aldbourn & Baydon LINK Scheme		07767 116895
Baydon Allotment Association	Cllr Amy Bryan	01672 540816
Baydon Flyers	Rob Howe	07903 830259
Baydon Social Group	Barbara Furber	540695
Baydon Village Website	Mark Austen	541342
Brownies	Wendy Appello Jayne Dominy	541469 540450
BYPA	bypa@baydon.org	
Church Wardens	Michael Ball Margaret Hill	540117 540789
Clergy - Team Rector	Simon Weeden	520235
Friends of Baydon School	Abby Apiafi George Corney	07987 706746 07899 948722
Parent & Toddler Group	Alison Jones	540608
Parish Council Chairman	Tamsin Witt	07766 883883
Parish Council Clerk	Charlotte Booth : ParishClerk@baydon.org 07729 225344	
Patient Representative	Joele McGowran	540784
Police - Local Beat Manager	Nick Spargo	101 ext 739819
Little Crickets Pre-School	Fraza-Jane Robins 07818447366 or <a href="mailto:Baydonpreschool@outlook.com">Baydonpreschool@outlook.com</a>	
Red Lion Pub	Julie	541224
St Nicholas School - Head	Caroline Knighton	540554
Wagtails	Mandy Osborne	07826 646631
Ramsbury Surgery		520366
Ramsbury Surgery <b>Appointments</b>		521234
Lambourn Surgery		01488 71715
Lambourn Surgery <b>Appointments</b>		01488 72299





**Baydon Mowers**

Sales & repair of all garden machinery

T. 01488 71333

E. [sales@baydonmowers.co.uk](mailto:sales@baydonmowers.co.uk)

[www.baydonmowers.co.uk](http://www.baydonmowers.co.uk)



Farncombe Farm . Baydon Road . Lambourn . RG17 7BN  
 Mon - Fri 9:00-5:30 . Sat 9:00 - 1:00



## St Nicholas' Church - Baydon



### Dec/Jan SERVICES

4 <sup>th</sup> Dec	10am	Team Communion at Holy Cross, Ramsbury
11 <sup>th</sup> Dec	9.30am	Patronal & Christingle
18 <sup>th</sup> Dec	4pm	Carol Service
24 <sup>th</sup> Dec	9pm	Candlelit Communion
25 <sup>th</sup> Dec	9.30am	Family Communion & Crib service
<hr/>		
1 <sup>st</sup> Jan	10am	Team Holy Communion, Aldbourne
8 <sup>th</sup> Jan	9.30am	Matins (Book of Common Prayer)
15 <sup>th</sup> Jan	9.30am	Informal Morning Worship
22 <sup>nd</sup> Jan	9.30am	Holy Communion (Common Worship)
29 <sup>th</sup> Jan	9.30am	Morning Worship – Education Sunday

*(Keep an eye on the Whitton Team website - <http://whittonteam.org.uk>)*



**SOWERBY**

**Sowerby & Son**  
 Est. 1974

Bespoke cabinet makers,  
 furniture restoration  
 and repair, re-polishing,  
 cane weaving and rush  
 seating etc

Enquiries welcome, visitors always  
 welcome by appointment please.

Aldbourn, Wiltshire: 01672 540795

[www.sowerbyandson.co.uk](http://www.sowerbyandson.co.uk)

[stephen@sowerbyandson.co.uk](mailto:stephen@sowerbyandson.co.uk)



**Peter Newson Ltd**  
 Tel: (01793) 534303  
 electrical contractors

**We're switched on  
 about wiring**






103 Broad Street, Swindon, Wiltshire SN1 2DT  
 Email: [info@peternewsonltd.com](mailto:info@peternewsonltd.com)  
[www.peternewsonltd.com](http://www.peternewsonltd.com)

### St Nicholas Church repairs – update

We have only had one quote back for Vestry repairs and it was for £15,000. We are presuming this is really excessive but the other 2 firms have not quoted. So we need to put the repairs list out to tender again. Do you know anyone who would be interested in quoting?

Please would you consider becoming a Steward of St Nicholas church by committing to a regular donation by standing order of perhaps £10 per month, but £5 or £3 would really help too. And, if you are in a position to Gift aid it, your donation would increase by 25%. We are struggling financially at the moment.

The standing order and Gift aid forms are in the church or please get in touch: Rowan at [Church@baydon.org](mailto:Church@baydon.org) or the Church Wardens: Margaret Hill 540789 and Mike Ball 540117 or any other church member you know.

## From the Minister...

### A Strangers Journey in December

As a new member of the Whitton Benefice team I look forward to the fast-approaching Christmas with anticipation. I love the Advent season because it is a season of renewed hope. Mary and Joseph journey to Bethlehem because of the Roman census. Joseph must go to Bethlehem because he is descended from the house and family of David. Even so, Mary and Joseph are strangers to Bethlehem, with no family to stay with, they must find shelter as Mary is about to give birth. The places to stay are full and in desperation, they accept accommodation in a stable underneath an Inn. In the hush of a star-lit evening shepherds are told by a host of Angels of the great news that in the humble surroundings of a stable our saviour has been born.

As a new member of the Whitton ministry team I too am a stranger on a journey. I have journeyed from my home in Royal Wootton Bassett to the villages of Aldbourne, Axford, Baydon, Chilton Foliat, Froxfield and Ramsbury. It has been such a joy to be part of the Whitton Benefice and I am gradually feeling less like a stranger and more like a member of the family. There is something rather wonderful to be part of the Whitton family and feel the warmth and hospitality of the village communities.

The Christmas season can often be a time when people feel lonely and isolated and so it is even more important that we take care of each other as a community. I'm not a great fan of the commercial side of Christmas although I appreciate that we all need to make a living. The important thing is to show each other kindness and consideration. To give thanks for the many ways we are blessed already and to keep the real meaning of Christmas, the arrival of Jesus, our saviour and King, at the heart of our celebrations.

*God Bless you and keep you safe,*

*Revd. Karen Rizzello*

### Treasurer required - Parochial Church Council

You do not have to be a regular at church. If you have an accounting/bookkeeping background and could spare a few hours a month your help would be invaluable. We need someone to do the bookkeeping on Quickbooks, supply reports quarterly to the PCC, and do the annual returns. Help to set up your computer with the software and go through how it all works will be given as well as any help through the year you may require. The day to day banking is done by the Church Wardens and the Giftaid paperwork by a PCC member, both of them reporting detail.



Wood burning Stoves  
Kitchen Ranges  
Biomass Boilers  
Full design and  
installation service

*Please visit our wood-burning centre to view our  
extensive range of wood fuelled appliances*



Formerly known as Sarsen Stoves

**New Premises, New Name - Same old family  
service and high standards of workmanship**  
Please quote **SE19** when contacting us

Sarsen Energy Ltd, Unit 1, Garlands Trading Estate,  
Cadley Road, Collingbourne Ducis, Marlborough,  
Wiltshire SN8 3EB  
Tel: 01264 850742 Fax: 01264 850549  
email: [info@sarsenenergy.co.uk](mailto:info@sarsenenergy.co.uk)  
[www.SarsenEnergy.co.uk](http://www.SarsenEnergy.co.uk)







## Carpet and Upholstery cleaning

- ✓ Removes dirt and fungal spores
- ✓ Allergens including dust mite and pet hair
- ✓ Stain treatment & Stain Guarding
- ✓ Free estimates / Affordable rates
- ✓ Local service fully insured
- ✓ Sofa, curtain and rug cleaning



Call Jonathan for a Free estimate

Lambourn 01488 670 113

[www.eclipsecleaning.co.uk](http://www.eclipsecleaning.co.uk)

Please look at our website [Testimonials](#) to see what other local people think!

## Activities for Baydon Children in the Whitton Team

stories, craft, songs and activities at St Michael's church Aldbourne :

See <http://whittonteam.org.uk> for full details

"Sparklers" – activities for pre-schoolers term-time Mondays 9.15 – 10.30

"Sparkler Plus" 19 December 2016 10 am – 12.30 10 am – 12.30

**Saturday Club** – for 5-11 year olds (with a parent or carer) from 10 am – 11.30 am 15 October colour green, 26 November colour rainbow – Church Rooms, Ramsbury. Games, quizzes, crafts and bible teaching, for more information please contact Judith Weeden 01672 520235 [judith@weeden.plus.com](mailto:judith@weeden.plus.com).

**Sunday Services with Children's activities** take place at Holy Cross Ramsbury see website for information

**ReFuel** for 12 to 16 years old from 5-6.30 on 2<sup>nd</sup> and 4<sup>th</sup> Sunday of every month - Aldbourne Vicarage – we meet, hang out, watch films, play games, talk about stuff that concerns this age group and eat some tasty foo. This term our focus is **chocolate** and we will be making chocolates to sell at Aldbourne Christmas fair...interested?, please contact Rev. Candice Marcus (540311) Nick.Lesley Whelan (541022) and if you are able to help please contact any of them.

**For Adults** (full details can be found on <http://whittonteam.org.uk> )

**Saturday Home Group** 1<sup>st</sup> Saturday of each month from 9.00-10.30am. Good coffee, bacon butties and discussion. Newcomers welcome. For catering purposes, please let us know if you will be joining us. Please contact Paul Trickey on 520630 or email [paul@thetrickeys.com](mailto:paul@thetrickeys.com).

**Home Group** - A group meeting across the Benefice churches on the 2<sup>nd</sup> and 4<sup>th</sup> Tuesday of each month from 7.30 – 9.30 pm. We hope this will be fun, helpful and a bit challenging – excellent for those exploring the idea of faith or growing in their faith. Please come and join us or contact Jenny Quadrat - Tel: 540675, [jennyquadrat@gofast.co.uk](mailto:jennyquadrat@gofast.co.uk) or Lesley Whelan - Tel: 541022, [lesley\\_whelan@yahoo.co.uk](mailto:lesley_whelan@yahoo.co.uk) for more information

---

**Parochial Visitors** Tina Evans 540250 and Kate Buckingham 07860 388197 are both Parochial Visitors for Baydon so if you would like some support or a visit for a cuppa please get in touch with either of us.

---

**Church Building** - We are looking for someone to work with PCC but only on the church building repairs. Are you or do you know someone who loves old buildings and has the enthusiasm and some building knowledge to manage the works that need doing?

---

**Christmas Box Appeal** – 14 boxes were delivered from the village to Haine & Smith in Marlborough on 18 November. Thank you for helping to make 14 children, facing unimaginable difficulties, feel loved.

## Heads Up!

The school year has started successfully with all the children settling back in to school really well. Last term, the children enjoyed their topic, All Around Us, and have returned after half term to learn more about volcanoes, earthquakes, the Fire of London and Bonfire Night as part of their new topic: Fire! The younger children are much looking forward to seeing a (small) re-enactment of the Fire of London on the playground ...

We have held a number of additional events including a tea party for Macmillan where we raised just under £300. During the day, we held our very own Baydon Bake-Off which the children judged! We celebrated Harvest in the Church on 14<sup>th</sup> October with standing room only. On the same day, the school opened its doors to the 'older members' of the Baydon community who shared a lunch cooked by some of the children. Many thanks to all those who joined us. Finally, the year 6s have enjoyed the Bikeability training programme which they undertook at the beginning of November.

Our open day on 8<sup>th</sup> November was a great success and we were delighted to welcome prospective parents in to our school. Our year 6 children showed our visitors around the school and the parents were particularly impressed by the children's enthusiasm for and pride in their school.

We are very lucky at Baydon to have a really dedicated group of parents who will go the extra mile to raise money for our school and, this term, they held one of their movie nights where the children arrive in their pyjamas, clutching their teddies and settle down in their sleeping bags to enjoy a film - this term it was 'Zootropolis'. Many thanks to all those involved - their contribution to the school is greatly appreciated.

We now look forward to Christmas and all that it brings which, for us, includes a Nativity for the younger children, a Carol Concert for the older children, a Christmas party, a Crib service and, of course, a visit from someone very special with a long, white beard at the Friends of Baydon School Christmas Grotto!

**Caroline Knighton**  
Headteacher



**MIKE WHALE CARPETS**  
CARPET & FLOORCOVERING SPECIALISTS

**CARPETS, VINYL, SISAL & SEAGRASS,  
LAMINATE AND ANTICO DESIGN FLOORS**  
SUPPLIED & FITTED AT VERY COMPETITIVE PRICES BY NICF MASTERFITTER

**Call Mike on 01672 541500 or 07836 230313**

**NICF** FOR YOUR FREE ESTIMATE & HOME SAMPLE SERVICE **NICF**  
National Institute of Carpet & Floorings MASTER FITTER [WWW.MIKEWHALECARPETS.CO.UK](http://WWW.MIKEWHALECARPETS.CO.UK) National Institute of Carpet & Floorings MASTER FITTER



### Home and Business Onsite IT Support

- Computer Repairs
- Networking
- Data Recovery
- New PC Setup

We also carry out  
CCTV Installations



### INNOVATIONCCTV

View your property from  
anywhere in the world 24/7

**01793 541320**

[www.innovationitsupport.com](http://www.innovationitsupport.com)

**Microsoft**  
CERTIFIED  
Professional

Microsoft  
Small Business  
Specialist



# SMITHS

of Axford

**Coal & Log Merchants  
Stockists of Calor Gas**

School House . Axford . Marlborough . SN8 3NP

Tel: 01672 515784 / 520980

[www.smithsofaxford.co.uk](http://www.smithsofaxford.co.uk)

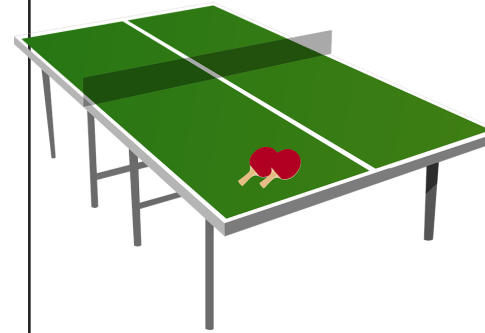
## Littleworth Plumbing & Heating

Finchley  
Finches Lane  
Baydon

T. 01672 541016  
M. 07770 877521

*Your local plumbing & heating specialist  
No job too large or small!*

## TABLE TENNIS IN BAYDON



Are you aware that there is a table tennis table in the BYPA hut that is available for use?

I am wondering how many people in Baydon are interested in playing this sport because if there is sufficient interest it may be worth forming a club and making regular bookings of the BYPA hut.

So if you have an inclination to play table tennis please contact:

Bernie Gribble 01672 540461 or [berniegribble@yahoo.co.uk](mailto:berniegribble@yahoo.co.uk).

## A Halloween Thank you



Just a quick note to say thank you to all the Baydon households that answer the door and hand out sweets to all the Trick or Treaters on 31 Oct.

Trick or Treating is especially exciting for the little ones who are desperate to show off their costumes to everyone!

We try and only call on houses with pumpkins and really appreciate the warm welcomes. So thank you all for making Halloween in Baydon a real treat every year!!!

*From a grateful Baydon Mum with a very happy 5 year old. X*

## PROSPECT HOSPICE BOX INFORMATION

The Autumn collection for the Prospect Hospice amounted to £178.79. Thank you to all the collectors who once again contributed so generously. See you all again in April/May for the Spring collection!

**Prospect**  
Hospice

Take a break from your Christmas chores  
because it's the second....

## Baydon Village Christmas Concert!

Join us for a short and fabulously festive  
Village Concert at 4pm on Christmas Eve  
in Baydon St Nicholas Church!

Take a break from all the rush and enjoy  
half an hour-(ish!) of Christmas cheer!

Festive songs, music and poems performed  
by members of your village!

**HAPPY CHRISTMAS ONE & ALL!**

A collection will be taken at the end for Crisis at  
Christmas last year we raised over £500!

### Kate Buckingham RHS dip Professional gardener

Does your garden need a re-jig?  
Do you know what you like but don't  
know how to create it?  
Is it a bit empty, or overgrown?  
Would you like to learn about pruning?

Or something else...

### Advice, design, planting plans and supply of plants

I am available by the hour, half or  
full days

**07860 388197**

## Fitness In The Village

### Personal Trainer



Completely private, professional exercise studio  
Tailored one to one private sessions  
Fitness assessments  
Tailored nutrition plans  
Weight loss specialist  
Swedish massage  
Sports & remedial massage

Don't worry if you are overweight or never exercise  
*Everybody is welcome!*

Get fitter & healthier in a friendly & caring environment



Call CHRIS for any enquiries on **07525 015 408**

Email: [chris@fitnessinthevillage.co.uk](mailto:chris@fitnessinthevillage.co.uk)

Web: [www.fitnessinthevillage.co.uk](http://www.fitnessinthevillage.co.uk)

### Aldbourn & Baydon Aid in Sickness Fund

The fund benefits the sick or those  
in financial difficulty because of  
sickness. Small grants are offered to  
residents of the two parishes plus  
loans of medical equipment (to  
parishioners and visitors)  
All bona fide enquiries welcome and  
those from friends and neighbours

#### Contact

Debbie Moxon (Baydon) on 540266

Jocelyn Evans (Aldbourn) on

540206

## Bozard & Co Traditional Gunsmiths



- Gunfitting and Alterations
- Repairs and Servicing
- Clothing and Accessories
- New and Used Guns

[www.bozardandco.com](http://www.bozardandco.com)

for more information  
Tel: **01488 670303**  
Lowesden Works, Lambourn Woodlands,  
Berkshire, RG17 7RY





**Tel: (01635) 36967**  
[www.justnewburyltd.co.uk](http://www.justnewburyltd.co.uk)  
 email: justnewburyltd@yahoo.co.uk

**SHOWROOM AND SALES COUNTER**  
**34 BOUNDARY ROAD NEWBURY BERKS RG14 5RR**

**PVC-U WIINDOWS  
 FITTED**

- 1 window - £250
- 2 windows - £490
- 3 windows - £720
- 4 windows - £950
- 5 windows - £1175
- 6 windows - £1380
- 7 windows - £1575
- 8 windows - £1760

White. Very High Security Locking.  
 Internally beaded 28mm  
 'A' rated Sealed Units.  
 white handles.  
 + £50 per opening subject to survey.

★ **CONSERVATORIES**

All made to measure and custom built  
 including all building work

★ **K2 CELCIUS ELITE GLASS ROOFING**

(Totally amazing specifications)

★ **COLOURED COMPOSITE DOORS**

Fully installed from **£899** inc

★ **FASCIA - SOFFIT - GUTTERING**


Eurocell & Marshal Tufflex Installers

★ **BI-FOLD DOOR SPECIALIST**

Aluminium - PVC-U

★ **EQUINOX AND GUARDIAN**

Solid Roofing Installers, replacement or new build.

★ Registered  for building regulation approval installations ★



we are the only local  
 double-glazing installer  
 recognised by which?



All work insurance backed.  
 Public Liability Insurance.  
 10 year warranty

DEBIT & CREDIT CARDS ACCEPTED

**NO DEPOSITS TO PAY - FREE QUOTATIONS**

**POP IN AND SEE US**

**TRADE & DIY COUNTER AVAILABLE**

**Baydon Bonfire and Fireworks**



On behalf of the Fireworks Team we would like to say a massive thank you to everyone who came and supported the bonfire and fireworks display on the 5th November. We had an amazing attendance, with over 900 people coming through the gate who made this event another very successful evening.

We would like to thank Debbie at the shop, Julie at the Red Lion, the Parish Council, the ladies on the gate and Jonathan Smith for their continued support. A special thank you must be said to all the stewards for their help on the evening to make it a successful evening with everyone's safety paramount.

As in previous years ,thank you to the Baydon Brownies for providing refreshments.

Our on going training by Pains Fireworks yet

again proved invaluable as we believe it was our best display to date.

Because of your generosity we have £711.56 towards next years display for which planning has already started.

Finally we are in contact with the man in the big red suit and beard to see if he has time to visit Baydon , as soon as we know the date please look out for posters and the Baydon website for further details.

The Firework Team



**Baydon Brownies**



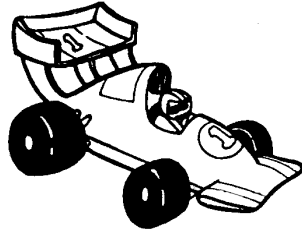
Baydon Brownies would like to thank everyone who came along to support the refreshment tent and the raffle at the Bonfire. It was so successful that yet again we nearly sold out of food just as the first fireworks were lit. All profits made from the sale of refreshments and the raffle went to Brownies to help subsidise evenings and trips for the girls. Special thanks to those who supported us through donating or supplying goods and services, in particular: Debbie at Baydon Stores, Colin Phillips for the loan of the generator, the Cooperative Aldbourne and Lambourn, Tesco Marlborough and Hungerford, Cobbs Farm Shop for the raffle hamper and T H Burroughs for the sausages.

**Thank you**

*from the leaders of 1st Baydon Brownies. .*

## Traffic calming in Baydon

The chicanes installed on Ermin Street in 2014 near the playground, have proved to be successful, reducing what was the highest speeds in the village, from an 85<sup>th</sup> percentile\* of 44.3mph at that end of the village, to the lower figure of 39.8mph. This is a positive first step, but in order to increase their effectiveness, plus reduce speeding throughout the village, more traffic calming measures are needed to work in conjunction.



Since 2013, Baydon Parish Council has been planning for the next phase of traffic calming and considering further obstacles for Ermin Street, with road safety outside the school being the highest priority. (A number of potential solutions, such as speed cameras, 40mph zones at village entrances, or a roundabout are simply not available. Other solutions, such as speed bumps, platforms and crossings are not allowed until we have first slowed the traffic with chicanes or buildouts. Therefore, our options are extremely limited.)

After consultation with Wiltshire Highways, a draft proposal was designed in 2015, to slow traffic approaching the primary school from both directions. A single buildout near the Ermin Close entrance was proposed, which means that westbound traffic would need to give way. Another single buildout, planned near the flashing 30mph sign at the western end of Ermin Street, would mean that eastbound cars must give way. These obstacles would be similar to those at Wanborough and Shrivenham.

Baydon Parish Council agreed to contribute £6,000 towards the £18,000 cost, having already secured £3,000 from CATG\*\* and successfully applied for £9,000 central government funding.

Our existing chicanes near the playground cost £31,000, of which Baydon Parish Council contributed £3,000, with the remainder being paid for by a very generous donation of £3,000 from a local resident, £3,000 from CATG and £22,000 from central government funding.\*\*\* Therefore, of the £49,000 cost of the traffic calming for the whole of Ermin Street, Baydon Parish Council would have only had to contribute £9,000 from village funds.

The proposed buildouts were on the agenda again, at the Parish Council Meeting on Monday 4 July 2016. During this advertised meeting, all the traffic calming plans and information was presented and residents were given an opportunity to give their feedback. Concerns were again raised by immediate neighbours about the proposed western buildout. Cllrs therefore requested an independent safety inspection and the October install date was delayed.

Following the positive independent safety report and Engineers response, Cllrs agreed in their September meeting to go ahead with the eastern chicane near Ermin Close, but asked Highways for possible solutions to alleviate the concerns around the proposed western buildout.

In their October meeting, being unable to make any changes to the proposed plans for the western build out, Cllrs agreed with immediate neighbours that they would not have sufficient sight lines for the eastbound traffic, which would be pushed over to their side of the road as it negotiated the buildout.

### Washing Machine Repairs

### Washmatics

G Perrett - Baydon

- ✓ New machines sold & installed
- ✓ Washing machine repairs

Call: 01672 540596  
Mobile 07818 638601

## ADY GODWIN

----- Car Body Repairs -----

We pride ourselves on carrying out work to the highest standards, using all the latest repair methods and water based paint technology.

- FREE ESTIMATES
- COURTESY CARS AVAILABLE
- INSURANCE WORK UNDERTAKEN
- COLLECTION & DELIVERY AVAILABLE

Unit 52, Ramsbury Rd, Membury, Hungerford,  
Lambourn Woodlands, Berkshire, RG17 7TJ  
Tel: 01488 72727

For more info please visit us at  
[adygodwincarrepairs.co.uk](http://adygodwincarrepairs.co.uk)

## CHRIS DUCK LANDSCAPES LTD

Design & Build

T: 01672 540 111  
M: 07776 201 727  
[www.chrisduck.co.uk](http://www.chrisduck.co.uk)



t.r.m

all makes serviced  
mot's & air con

chris coyle  
proprietor

unit 4,  
farncombe farm  
lambourn  
berkshire.  
rg17 7bn

07833 983333

01672 540602

[chris.coyle@virgin.net](mailto:chris.coyle@virgin.net)





## LOCAL AGENTS WITH LOCAL KNOWLEDGE

Our people make the difference...

“ Living & working in the area puts me in a unique position when it comes to selling the benefits of Baydon and the surrounding villages.

I have been working in the local area for almost 15 years. ”

Ross Sutton - Director

Contact your local agent today on  
01793 814542 or 07889 366130  
ross@richardjames.info

richardjames.info



# Perfect Polish

## I am a CND CERTIFIED NAIL PROFESSIONAL.

I provide a mobile service for busy ladies and Mums covering the surrounding villages around Hungerford.

I offer CND Shellac which is a power polish. It applies like polish, wears like gel and soaks off in minutes.

Let your nails be pampered in the comfort of your own home.

Mobile 07833137667

Therefore, Baydon Parish Council have agreed not to go ahead with the western buildout as proposed, but will continue with half the current project i.e. the eastern buildout near Ermin Close. We are hopeful that we will still be able to receive half of the funding previously secured.

There remains a need for a traffic calming obstacle at the western end of Ermin Street, plus there is a necessity to slow the eastbound traffic through the village. However, this will now be a separate project and new plans and funding applications will be required. Residents continue to request that the 30mph limit is pushed further out towards the cricket field and a buildout be installed there, but so far, Highways have repeatedly declined our requests.

Baydon Parish Council continue to work to reduce the speed of traffic through the village because this was highlighted as the number one priority for residents, during the creation of the Village Plan (a copy of which is available on the Baydon website). There are no quick fixes or easy wins - a variety of traffic calming measures are needed, introduced over a number of years which will require support and patience from everyone.

As always, further information can be found on [www.baydon.org](http://www.baydon.org), on the Parish Council notice board outside the shop and of course, Parish Council meetings where residents are invited to speak during the Public Question Time section of the meeting.

## Baydon Parish Council



## 2017 Parish Council Dates are:

- ♦ Monday 9th January 2017

BYPA Village Hall, Manor Lane.

Agendas and minutes are available at [www.baydon.com](http://www.baydon.com) and the Parish Council notice board outside the shop

## Rubbish and recycling collections

Tues Dec 6	Garden waste & Household waste
Tues Dec 13	Plastic and Card + black bin recycling
Tues Dec 20	Garden waste & Household waste
Weds Dec 28	Plastic and Card + black bin recycling
Tues Jan 3	Household waste only
Tues Jan 10	Plastic and Card + black bin recycling
Tues Jan 17	Garden waste & Household waste
Tues Jan 24	Plastic and Card + black bin recycling
Tues Jan 31	Garden waste & Household waste

# MOTHER GOOSE

A.L.E.C.  
Associated Light Entertainment Clubs  
Proudly Presents

*A Traditional Family Pantomime  
By Bob Heather & Roger Lamb*

**Thursday 8<sup>th</sup>**

**December**

7.30pm

**Friday 9<sup>th</sup>**

**December**

7.30pm

**Saturday 10<sup>th</sup>**

**December**

2.00pm & 7.30pm



Tickets on sale from Aldbourne Post Office

By kind permission of Lazy Bee scripts



**ND SERVICES established 20 years**

Serving the local community with 24-hour breakdown recovery across the UK.

At ND we pride ourselves on a warm and friendly welcome with an assurance of first class service by our team

★ **HORSEBOX SPECIALISTS** ★

★ MOT Testing - Classes 4, 5, 7 ★

★ Servicing and Repairs on all makes - Cars, Vans, 4x4, HGV's ★

★ Tyres and Exhausts ★



Unit F Aerial Business Park, Lambourn Woodlands,  
Membury, Hungerford, Berkshire RG17 7RZ

Phone: 01488 72118 [www.nd-services.co.uk](http://www.nd-services.co.uk)





**ALAN ARCHER**  
FENCING & LAND MANAGEMENT SERVICES

- ALL TYPES OF FENCING
- From Garden Fences to Equestrian Post & Rail and Stock Fencing
- Bespoke Wooden Gates
- Supply and erect Garden Sheds
- PADDOCK MAINTENANCE
- GENERAL ESTATE MANAGEMENT
- Mowing, Hedge Cutting, Hedge Planting
- Erection of Maintenance of Stables and Field Shelters

All work fully insured and carried out to the highest standard

e-mail [alan.archer9@btinternet.com](mailto:alan.archer9@btinternet.com)

Tel: 01672 540534 Mob: 07801 239763

## Banyard & Bailey

### Soft Furnishings & Upholstery



We are a family business specialising in the making of bespoke handsewn curtains, blinds & soft furnishings and a wide range of upholstery including headboards, chairs and small sofas

Call Ali or Fee who will discuss your needs and provide a free estimate

Ali : 07748 355462  
Fee: 07841 413608



## BLUNDY BUILDING SERVICES

All types of building works undertaken

- ▶ Patios
- ▶ Drives
- ▶ Walls
- ▶ Houses
- ▶ Extensions
- ▶ Plastering

Drawing for Planning Approval

01672 516374 or 870047

Mobile: 07976 634688

# Baydon Village Stores

Ermin Street Baydon SN8 2JP  
Tel: 01672 540266

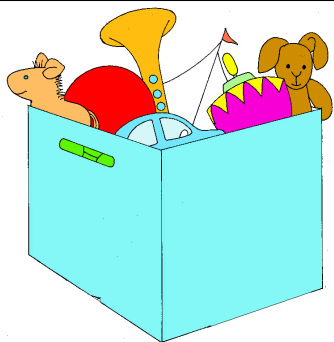
## Christmas Opening Hours

Day	Date	Shop	Post Office
Saturday	24 <sup>th</sup> December	0800 – 1330	0800 - 1300
Sunday	25 <sup>th</sup> December	Closed Have a Merry Christmas	Closed and enjoy the day
Monday	26 <sup>th</sup> December	0900 - 1100	Closed
Tuesday	27 <sup>th</sup> December	0900 - 1100	Closed
Wednesday	28 <sup>th</sup> December	0900 – 1300	0900 - 1300
Thursday	29 <sup>th</sup> December	0900 – 1630	0900 – 1630
Friday	30 <sup>th</sup> December	0900 – 1630	0900 - 1630
Saturday	31 <sup>st</sup> December	0800 - 1330	0800 - 1300
Sunday	1 <sup>st</sup> January	0900 – 1100 Wishing you a	Closed Prosperous 2017
Monday	2 <sup>nd</sup> January	0900 – 1100	Closed
Tuesday	3 <sup>rd</sup> January	0800 – 1630	0800 - 1630
Wednesday	4 <sup>th</sup> January	0800 – 1630	0800 – 1300
Thursday	5 <sup>th</sup> January	0800 – 1630	0800 – 1630

Thanking you for your support during 2016.  
PLEASE SHOP LOCAL

## Baby and Toddler Group

Baydon baby and toddler group is a lovely, friendly group held in the BYPA hall on Mondays during term time from 9am to 11am, and welcome any adult who accompanies a child or children aged from 0 years to school age. There are lots of lovely toys to play with and a garden to use when the weather is nice enough. We also have a craft activity every week. There is a hot drink for the adults when you arrive and snack time for the little ones is around 10am. We end the session with a song time where all the children can choose their favourite nursery rhyme to sing. Everyone is very welcome to join us and it would be great to see any new families who would like to come along. For further details please contact Ali Jones on 01672 540608 or e-mail [toddlers@baydon.org](mailto:toddlers@baydon.org)



## An informal cycle club in Baydon

*This is what we do:*

- A ride of about 20 – 25 miles, every Thursday evening.
- Mostly on quieter local roads with a different ride every week.
- Shorter versions possible if 20 miles is too much!
- Ad hoc rides and events organised at other times.
- A really great social way to get and stay fit.
- We keep together so no-one's left behind and offer mechanical support if you need it.
- We go whatever the weather.
- We all meet after the ride for drinks in the Red Lion.
- Lots of free cycling advice and help.
- Gents and Ladies over 18 welcome.



**Every Thursday departing the Red Lion 6.30 pm**

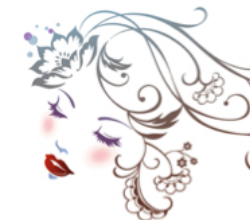
returning about 8.30– 9.00pm. You will need lights for the last bit of the ride.

Rob: 07903 830 259

**Please tell anyone you think might be interested!**

## Total Look

*Beauty therapy and Reflexology*



*Dr Belter Facials*

*(95-100% plant extracts)*

*Brow treatments*

*Waxing*

*Micro Needling*

*Mii Cosmetics*

*(For application, tuition and purchasing)*

*Manicures Jessica/Opi*

*Pedicures*

*Tanning treatments*

*Massage*

*Reflexology*

*Ped-Pod foot care*

*Derma renew-A-renew*

*For improvement of fine lines and pigmentation  
- Course available.*

*For enquiries and appointments*

*Call Angela on 07834 686 936*

*At Four Barrows Center for hair and beauty, Aldbourne.*

*01672 540 391*

mark jerome  
painter & decorator

All types of interior and exterior decorating  
using the latest in dust free technology

Transform your solid wood kitchen with paint using  
the best hardwearing paint finishes available

"Thanks for a fantastic job!"  
Debbie Moxon, Baydon Post Office

01793 790307  
High St, Wanborough





## Do You Know Someone With Sight Problems?

You can hear all of the latest local news and gossip, a weekly selection of magazine articles, and get to know what's going on in your area from our local Talking Newspaper.

Produced each Friday by volunteers, a cassette is sent out free of charge to blind or partially sighted folk in the area.

Call Michael Brown on 01672 562979 and he'll do the rest!



## PLUMBING & HEATING FRANCIS ANDREW



Central Heating Installation & Repairs  
Boiler Installation & Repairs  
Landlord Certificates  
Bathroom & Kitchen Installations  
All domestic Plumbing

No call out charges  
Free estimates  
24hr service

Mob: 07720 245333  
Home: 01793 791542  
Email: faplumbing@hotmail.com

Fully Qualified & Insured

## Meet your CAM!

Andrew Jack, Marlborough's Community Area Manager, will be working in Marlborough Library from approximately 12.00pm until 5.00pm on most Wednesdays. Andrew is available to chat concerning Area Board matters, such as Community Area Grant funding and consultations as well as signposting other Wiltshire Council services. Andrew can be reached on 01225 713109 or email: [andrew.jack@wiltshire.gov.uk](mailto:andrew.jack@wiltshire.gov.uk)

## Marlborough Area Board

**Next meeting is:** Tuesday 24 Jan 2017

Marlborough Town Hall, High Street, Marlborough, SN8 1AA  
6.30 pm for a 7pm start

**More news:** The publication 'Just a Minute' is a summary of the official minutes for the Marlborough Area Board and is available in full on Baydon's Website. Parish News from the Council also available on the website.

## Marlborough CAN Newsletter

**Marlborough CAN** helps you keep in touch with things that are happening locally. With regular news from the Council, Police, NHS and many other local community groups and organisations, you can be the first to know what is happening. With opportunities to have a say on important issues and to take part in local events and activities, **Marlborough CAN** will put you in the picture.

See the latest CAN at Baydon.org or go to  
<http://marlborough.ourcommunitymatters.org.uk/>

## Baydon Notice Board

If you are a Facebook user, do you know there is a public group called the Baydon Notice Board?

A great place to see what's on, available services in the area, items for sale etc.

Also a great place to broadcast items of current interest to Baydon villagers.



Visit [www.baydon.org](http://www.baydon.org) for up-to-date village news & events, weather and features, Parish Council minutes & agendas

## Community Beat Manager



The community beat manager for Marlborough rural, which covers areas such as Ramsbury, Aldbourne, Baydon and Chilton Foliat is Anthony Boardman.

He can be contacted either by email address which is [NPTMarlborough@wiltshire.pnn.police.uk](mailto:NPTMarlborough@wiltshire.pnn.police.uk) or at Marlborough police station via the 101 non emergency number using extension number 77430352.

Any crime reports should go through the proper channels and be reported through the 101 or 999 systems.

**PC 352 Anthony Boardman**  
**Marlborough police station**  
**Neighbourhood police team**  
**Wiltshire Police**

**Non emergency number - 101**  
**extension number 77430352**

**WILTSHIRE POLICE**

**101** **999**

101 is the number to call when you want to contact the police - when it's less urgent than 999.

In a NON EMERGENCY dial 101 if:

- you want to report a crime/issue that does not require an immediate emergency response
- you or someone else are not in immediate danger
- you would like to speak to your local police officer
- you want to provide information about a crime

If you are deaf, hard of hearing or speech impaired you can textphone 18001 101 in a NON EMERGENCY

999 is the number to call when you want to contact the police in an EMERGENCY.

Dial 999 if:

- you need an immediate response because a crime is in progress or you think it is
- you or someone else is injured or there is a threat to life
- a serious road traffic collision has taken place
- violence is being used or threatened

This is a guide not a definitive list

If you are deaf, hard of hearing or speech impaired you can text 80999 in an EMERGENCY

[www.wiltshire.police.uk](http://www.wiltshire.police.uk)

**WILTSHIRE POLICE**  
 Non emergency number:

**101** IN AN EMERGENCY ALWAYS CALL 999

**Your local Handihelp**

A community-based repairs and maintenance service from Ridgeway Care & Repair Wiltshire.

**General maintenance**  
 Including carpentry, fencing, paths and garden clearance.

**Plumbing**  
 All types of minor plumbing works.

**Minor adaptations**  
 Including grab rails, hand rails and portable or fixed ramping installation.

**Electrical**  
 All types of minor electrical works.

**Security**  
 Including door or window locks, lighting, CCTV and smoke alarm installation.

**To be eligible for this service, you must be aged 60 or more, or at least 18 and with a disability.**

**01380 735555**  
[handihelp@ridgewaycommunity.org.uk](mailto:handihelp@ridgewaycommunity.org.uk)

Supported by Wiltshire Council and NHS Wiltshire.

Wiltshire Good Neighbours can put you in touch with the people & services who can really help you to improve living your independent life.

By visiting you and talking with you we can identify the services that will make the most difference to your day to day living. We can then refer you to these services, and follow up to ensure they are delivered accordingly.

We can provide information on a variety of topics & these may include:

- Befriending services and social activities
- Advice on benefits
- Healthcare needs
- Transport
- and many more.....



If you think we can help you to find the services you need then give us a call on **07557 922030** [www.wiltsgn.org.uk](http://www.wiltsgn.org.uk)

**The service is free and confidential**

Funded by Wiltshire Council and provided by Community First in partnership with Age UK Wiltshire and Age UK Salisbury



## Dog Mess

All dog owners are responsible for their own dog's mess. It should never be left where others can tread in it, nor on areas of land that are mown (for example by the Alpaca farm).

Here are words from Wiltshire Council's web-site:

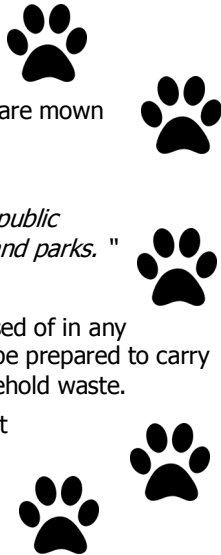
*"Dog owners must, by law, pick up any mess made by their pets in public places such as roads, footpaths, school playing fields, sports fields and parks."*

### What if there is not a bin near when my dog messes?

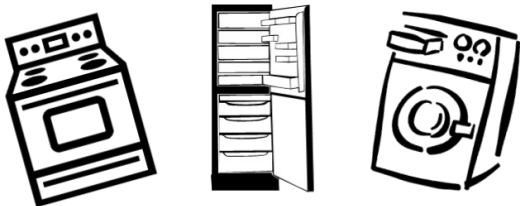
Dog waste suitably wrapped in a plastic bag or similar can be disposed of in any litterbin or dog waste bin. If none are available nearby, you should be prepared to carry the waste home where it can be disposed of with your normal household waste.

Please enjoy walking with your dog in our beautiful country-side, but

## Leave only paw-prints



Replacing your washing machine, tumble dryer, fridge or electric cooker?



refurbishing furniture  
reviving communities

### The white goods recycling charity

Please donate your old machines to us so we can refurbish them for families in need.

Wiltshire-wide and Swindon  
collection service.

t.(01380) 720200 e.info@kfr.org.uk

www.kfr.org.uk

Registered Charity Number 1056649

Want to sell, loan, buy or rent something? Lost something (or someone!) Or found something you think might be precious to someone? Advertise here for free! But please keep it short! And no commercial please...



## FROM THE A.L.E.C. STAGE

Pantomime season is upon us again – oh yes it is! And where better to enjoy it than in our neighbouring village, Aldbourne. We have a fabulous cast (including some of the Junior Chorus who live in Baydon) and production team, who've been working hard since September on the family favourite, "Mother Goose". Tickets are now on sale at the Aldbourne Post Office & Café. The performances are:

8<sup>th</sup>, 9<sup>th</sup> & 10<sup>th</sup> December 7.30pm

The bar opens at 7.00pm and tickets are just £8

10<sup>th</sup> December

2.00pm Matinee

Doors open at 1.30pm and all tickets for this performance are just £6

As Director, Vanessa Butler has taken this traditional pantomime and added her own local twist. With some great music and of course loads of fun! We look forward to seeing you there.

Meanwhile, we are looking at our programme for 2017 and would love to hear from potential directors who'd like get involved with ALEC so please do get in contact. For more information about this or anything else, (whether it be strutting your stuff on stage, directing or getting involved behind the scenes), please get in touch with Matt Lawler - 01672 540132 or - [nessex1985@yahoo.co.uk](mailto:nessex1985@yahoo.co.uk)

**Date for your diary:** 25<sup>th</sup> February 2017 The annual ALEC Supper Quiz will be back

Keep in touch and see what we're up to by liking us on Facebook

ALEC - Aldbourne Light Entertainment Club



With over 100 years of history,  
a traditional law firm offering a cost-effective  
and personal service



Pooleys  
Solicitors LLP



T: 01793 488 848

F: 01793 511 209

Commercial and Residential Property  
Wills, Power of Attorney,  
Probate and Estates  
Family Law

Twitter: @PooleysLegal

E: [mail@pooleyssolicitors.co.uk](mailto:mail@pooleyssolicitors.co.uk)

W: [www.pooleyssolicitors.co.uk](http://www.pooleyssolicitors.co.uk)

A: 10-15 Regent Circus, Swindon, SN1 1PP

## Little Crickets Pre-School

Little Crickets Pre-School has a busy time coming up! This small setting is based at the BYPA Hall in Manor Lane and has a staff team committed to offering the best in care and early years education for our Little Cricketers!

The children benefit from an early years programme that covers all areas of learning but the staff place huge emphasis on the care, welfare and happiness of each child.

This term we have been introducing a new routine and activities for the children that we hope will extend their learning – for example, sand and water experiments, and creating our very own Little Crickets Office, where the children can develop their writing and communication skills. Lots of fun and lots of learning too! Everything we do with the children links in with our weekly programme: Talking Tuesdays, Weird Wednesdays, Thinking Thursdays and Foodie Fridays!

As we approach the festive time of year, staff are planning a Christmas Event and the children are very excited about making and sending the invitations to let parents know what is happening on 9<sup>th</sup> December. Of course, no Christmas Event would be complete without a small gift being delivered to our Little Cricketers!

Due to promotion, our current Deputy Beckie Callaghan, will become our permanent Manager from 1st December. We are actively looking for a Deputy to support Beckie in her role. For further information on this please email

[application.baydonpreschool@outlook.com](mailto:application.baydonpreschool@outlook.com).

## Village Litter Pick

14 villagers (including 4 young children) met on the Green on Saturday 19<sup>th</sup> November 2016 to get “geared up” for the Litter Pick.

With high viz jackets, picker poles and black bags they set off in various directions to clear Baydon of litter.

Part of a car’s cooling system, a large wheel trim and some empty paint tins were some of the more unusual items found amongst the cans, cardboard containers, plastic bottles and other general litter.

Several bags were collected and were taken to the tip later in the day.

Keep a look out for the date of the next Litter Pick in the spring – Maybe you can help next time!



## Mobile Library

The Mobile Library will be outside the school on the following dates:

☼ **8 Dec**

☼ **5 Jan**

**10:50 - 11:40**

Mobile Library times can be found at

<http://services.wiltshire.gov.uk/MobileLibrary/Library/Stop/78>

## Aldbourn Library Opening Hours

- **Monday** from 2:00pm till 5:00pm & from 6:00pm till 8:00pm
- **Tuesday** from 10:00am till 12:00pm\*
- **Thursday** from 2:00pm till 5:00pm & from 6:00pm till 8:00pm

\* *staffed by volunteers*

## Aldbourn & Baydon Link Scheme

(Reg Charity 1112698)

### Help is available for:

#### Transport for:

Medical, dental or other similar appointments  
Visiting a friend or relation in hospital  
Collecting shopping, library books etc

#### Help at home

Small tasks, visiting for a chat or a game of cards  
Occasionally caring for pets  
Helping with post or paperwork  
Small gardening jobs


There's no charge but the Link Scheme welcomes donations from those who use the service


**Phone: 07767 116 895**



# CLAIRE PERRY

*Working hard for the  
Devizes Constituency*

 Claire Perry MP  
House of Commons  
London  
SW1A 0AA

 01380 729358

 [www.claireperry.org.uk](http://www.claireperry.org.uk)

 [claire.perry.mp@parliament.uk](mailto:claire.perry.mp@parliament.uk)



*I hold regular surgeries around the Constituency  
- please call or email to book an appointment.*

Baydon currently have 3 vacancies for Councillors and we will shortly have 5 vacancies. Baydon needs a full complement of 7 Councillors to work most effectively and represent a wider range of views from the village. Could you step in?

Why be a Parish Councillor?

Because it's an opportunity to:

- Positively impact the place in which you live
- Get to know a variety of different people from around the village
- Work in a team with other Cllrs who have Baydon's best interests at heart
- Take part in interesting projects that provide better facilities for Baydon
- Take part in interesting projects that provide better facilities for the village
- Help organise and take part in village events and groups
- Experience a challenge – often dealing with opposing views from residents
- Build your skills and personal development with the variety of work that you do as a Cllr
- Do something completely different to your day job

Please contact the Clerk on 07729 225344 or  
[baydonparishclerk@gmail.com](mailto:baydonparishclerk@gmail.com)

  
**YOUR  
VILLAGE  
NEEDS  
YOU!**

## What is a Parish Council?

A parish council is a local authority that makes decisions on behalf of the people in the parish. It is the level of government closest to the community, with the district authority, Wiltshire Council, above it in the hierarchy.

Parish councils make all kinds of decisions on issues that affect the local community. Probably the most common topics that parish councils get involved with are planning matters (they are statutory consultees), traffic calming, crime prevention, managing open spaces/village greens, playgrounds and allotments. They campaign for, deliver and maintain better services, facilities and activities, including village events, foot-paths, leisure and sports facilities, youth projects, litter bins, signage and lighting amongst many other things.

Councils usually meet once a month for the council meeting, to which members of the public are also invited to listen, with limited amount of time for public questions. Meetings may last two or three hours, depending on the agenda. In addition to the regular meetings, councillors are required to attend other meetings representing the council. For example acting as a representative on an outside body, community activities or helping develop a new project for the community.

Their activities fall into three main categories: representing the local community, delivering services to meet local needs, and improving quality of life and community well-being.

Parish councils are funded by levying a "precept" collected with the council tax paid by the residents of the parish. Parish councils have unpaid councillors who are elected to serve for four years, unless a casual vacancy arises which may be filled by a by-election or by Co-option of Competence to eligible local councils.

The administration of the Council is managed by the Parish Clerk, who is the only paid employee acting in a combined statutory role as secretary and Responsible Financial Officer of the council. This role is part-time.

The necessary financial monitoring and reporting are the clerk's responsibility, and in this role the clerk is known as the "Responsible Financial Officer" (RFO) of the Council. The clerk is also the "Proper Officer" of the Council. They "enact" (cause to happen) the decisions of the Council, and they receive official correspondence and issue correspondence on the instructions of the Council. The clerk also prepares agendas for meetings of the Council and its committees, gives notice of these to the Council members and the public, and records and publishes the minutes of these meetings. They are the formal point of contact with the public, and are a source of information for the public about the Council's activities.

The clerk also provides procedural guidance for the Council itself, and ensures that statutory and other provisions governing or affecting the running of the Council are observed.

*(Extracts from Wiltshire Council Website and Wikipedia).*



## The Red Lion FREEHOUSE

Ermin Street, Baydon, Wiltshire SN8 2JP  
01672-541224

### OPENING TIMES

**Mon** Closed all day  
**Tues** 4.30 to 10pm  
**Wed, Thurs** 4.30pm to 10.30pm  
**Fri** 4.30pm to 11pm  
**Sat** 12 noon to 11pm  
**Sunday** 12 noon to 7pm (except quiz night)

### FOOD TIMES:

**Tues** – Kitchen closed – Bookings by arrangement  
**Weds to Fri:** 5.30pm to 9pm (Last order 8.30pm)  
**Sat:** 12 – 3pm & 5pm to 9pm (Last order 8.30pm)  
**Sunday:** 12pm to 3pm (Last order 2.30pm) Home cooked Sunday Roast from £9.50 / Senior Citizens 6.50 / Children £5.00

Guinness Quality award.

We are in CAMRA's Good Beer Guide 2016, UK's Best Selling Beer & Pub Guide.

**Baydon Bikers (motorbike club)** - Meet regularly throughout the month for rides and social gatherings. Check out their website baydonbikers.co.uk for more details and contact numbers.

**Baydon Bicycle Club** - Every Thursday - Departure is from the Red Lion car park at 6.30pm and again anyone wishing to join them just turn up.

**Casual Cribb Club** – The league starts again in September, come along to play or learn the game in a friendly and relaxed atmosphere on a Wednesday evening. Contact Tanya Brown on 07986730470.

**Quiz Night**– First Sunday of the month at 7pm. Teams of 4 at £2.00 per person.

**Wiltshire Good Neighbour Community Lunch** - 2<sup>nd</sup> Thursday of the month at 12pm

A social afternoon for anyone in Baydon or the surrounding villages to join us for a relaxed lunch, light conversation and good company. A two course pre booked meal for only £7.50

**Open Music Nights** – 1st Wednesday of the month

**Weds to Sat** – Steak Deal – Two 8oz Sirloin steaks with all the trimmings and a bottle of house red or white wine £35.00 Full menu also available.

### Events:

**Sunday 4<sup>th</sup> December 7pm** – Christmas Quiz Night raising money for "The Dogs Trust"

**Thursday 8<sup>th</sup> December** – Wiltshire Good Neighbour Community Christmas Lunch-  
Pre booking required

**Friday 9<sup>th</sup> December** – Ladies Christmas Party -Pre booking required

**Saturday 24<sup>th</sup> December** – Christmas Eve Open Mic Night

**Saturday 31<sup>st</sup> December** – New Years Eve Party

**PLEASE NOTE WE ARE CLOSED FOR ANNUAL HOLIDAY AND GENERAL MAINTENANCE FROM 1<sup>st</sup> JANUARY 2017 REOPENING Wednesday 18<sup>th</sup> JANUARY.**

*For full details of all our clubs and events look out for posters or check The Red Lion or Village website.*

Remember you can book the pub or dining area for a Corporate event, private function, party or workshop. We can cater for a sit down meal or a buffet. Please do not hesitate to contact us and we will do our best to make your event as pleasant and stress free as we possible.

*Myself and all the team at the Red Lion would like to wish you all a very happy Christmas and wish you a very happy, healthy and prosperous new year.*

*Julie  
Dec 2016*

## CHRISTMAS OPENING AND FOOD TIMES

<b>Christmas Eve</b>	<b>12 noon to 12.30am – Food 12.30-5pm</b>
<b>Christmas Day</b>	<b>12 noon to 2pm – No Food</b>
<b>Boxing Day</b>	<b>Closed</b>
<b>Tuesday 27<sup>th</sup></b>	<b>Closed</b>
<b>Wednesday 28<sup>th</sup></b>	<b>4.30pm -10pm – No Food</b>
<b>Thursday 29<sup>th</sup></b>	<b>4.30pm –10pm – Food 5pm-8pm</b>
<b>Friday 30<sup>th</sup></b>	<b>4.30pm –10pm – Food 5pm-8pm</b>
<b>Saturday 31<sup>st</sup></b>	<b>12 noon to 12.30 – Food 12.30 -5pm</b>

# The Red Lion



The Baydon Social Group met in the Red Lion pub for their October meeting to hear an excellent talk by Mr George Styles an expert in Modern Silver and joint owner of the Silverware shop in Bridge Street Hungerford.

Mr Styles began with the history of silver illustrated by some very fine pieces that he had brought with him.

He then conducted a quiz where members had to identify various silver utensils. Mrs Christine Ralph won the quiz,

Mr Styles then continued talking about modern pieces, their craftsmen and styles.

The November meeting was also held in the Red Lion and involved a supper and quiz organised by Mr Tony Prior. As Mr & Mrs Ralph won (again!) they offered to sort the next quiz.

The December meeting will be held at the Bowling Alley in the White Hart, Stratton, Swindon. Supper will follow the game.

Anyone interested in becoming a member or just attending the odd meeting please contact Maureen Yeo on 540725 or Barbara Furber on 540695.